

# MAX HD2

## Dual 4G LTE Mobile Router

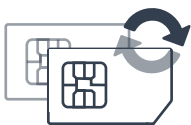


### Dual 4G LTE Mobile Router

The HD2 gives you blazing fast connectivity on the road with dual embedded cellular modems, SpeedFusion bandwidth bonding, simultaneous dual-band 11ac Wi-Fi and a built-in 4-port GE switch with PoE capability.

Works With

And worldwide 4G LTE carriers



### Dual Cellular for Multiple Carriers

Dual SIM slots allow you to use the same or different cellular providers for bandwidth bonding or eliminating blind spots.



### Fleet Tracking and Management

With built-in GPS fleet tracking and InControl cloud-based management, you can keep tabs on location and manage your mobile network from any Internet-connected device.



### Terminal Block for Secure Power Supply

The MAX HD2 is equipped with a terminal block for secure installation in vehicles and other locations.



### SpeedFusion Bandwidth Bonding and Seamless Failover

SpeedFusion bandwidth bonding technology bonds all connected bandwidth into a single superfast stream, using the same or different cellular providers.



### Customize Captive Portal

Branding your captive portal is as easy as uploading your logo and terms & conditions. You can easily set bandwidth allowance and access duration per user or manage access using RADIUS.

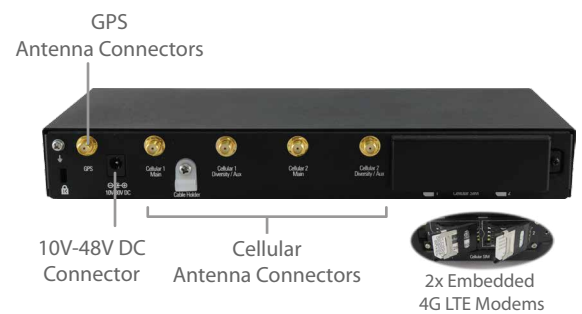
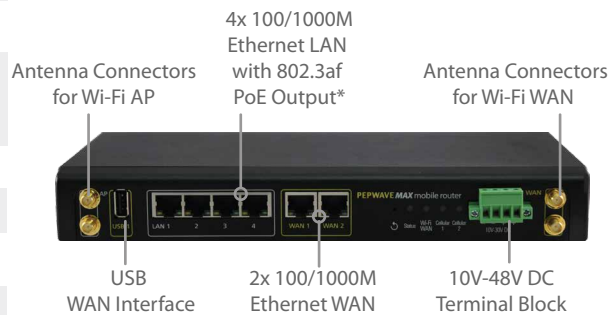
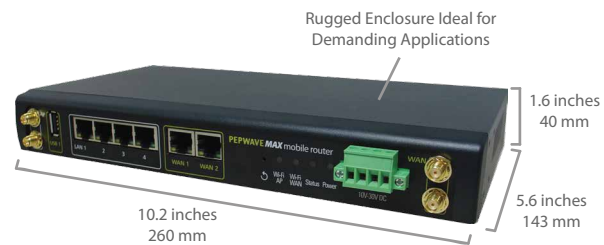


### Certified Toughness

In addition to rugged metal enclosure, HD2 has certifications on:  
 Shock and vibration resistance (EN 61373:2010)  
 RF Port Lightning Immunity (ITU-T K.20 (+/- 1.5 kV))  
 Railway Applications (EN 50155)  
 Electromagnetic Compatibility (EN 61000)

# Specifications

	<b>MAX HD2</b>
WAN Interface	1x USB Interface 2x GE 2x Embedded LTE Modems
LAN Interface	4x GE
Wi-Fi Interface	802.11ac 1750 Mbps Wi-Fi WAN and/or AP
Router Throughput	200Mbps
Recommended Users	25-150
Cellular and GPS Antenna Connector	4x SMA Antenna Connectors 1x SMA GPS Antenna Connector 4x RP-SMA Wi-Fi Antenna Connectors
Power Input	DC Jack/Terminal Block: 10V - 48V
Power Output	Up to Four 802.3af PoE Outputs*
Power Consumption	28W (max.)
Dimensions	1.6 x 10.2 x 5.6 inches 40 x 260 x 143 mm
Weight	2.2 pounds 1 kg
Operating Temperature	-40° – 149°F -40° – 65°C
Humidity	15% – 95% (non-condensing)
Certifications	FCC, CE, RoHS, E-Mark RF Port Lightning Immunity: ITU-T K.20 (+/- 1.5 kV) Shock and Vibration Resistance: EN 61373:2010 Railway Applications: EN 50155 Electromagnetic Compatibility: EN 61000
Warranty	1-Year Limited Warranty



\*PoE Activation Kit is available separately

## Ordering Information

	Product Code	Carrier	Embedded Modem	4G Bands/Frequencies (MHz)	3G Bands/Frequencies (MHz)
<b>4G LTE</b>	MAX-HD2-LTE-US-T	Verizon/Sprint/AT&T/T-Mobile	2	B2/1900, B4/AWS, B5/850, B13/700, B17/700, B25/1900	WCDMA/HSPA+/DC-HSPA+: B1/2100, B2/1900, B4/AWS, B5/850, B8/900 EV-DO Rev.A: BC0/800, BC1/1900, BC10/800
	MAX-HD2-LTE-UE-T	Cellular 1: Verizon/Sprint /AT&T/T-Mobile Cellular 2: Europe/International	2	Cellular 1: B2/1900, B4/AWS (XLTE), B5/850, B13/700, B17/700, B25/1900 Cellular 2: B1/2100, B3/1800, B7/2600, B8/900, B20/800	Cellular 1: WCDMA/HSPA+/DC-HSPA+: B1/2100, B2/1900, B4/AWS, B5/850, B8/900 EV-DO Rev.A: BC0/800, BC1/1900, C10/800 Cellular 2: WCDMA/HSPA+/DC-HSPA+: B1/2100, B2/1900, B5/850, B6/800, B8/900
	MAX-HD2-LTE-E-T	Europe/International	2	B1/2100, B3/1800, B7/2600, B8/900, B20/800	WCDMA/HSPA+/DC-HSPA+: B1/2100, B2/1900, B5/850, B6/800, B8/900

Product Code	Description
ACW-609	Includes 1x 48V Power Supply and PoE License. Enables 4x 802.3af PoE Output Ports

## Features

**WAN**  
Support for PPPoE, Static IP, DHCP  
WAN Link Health Check  
Bandwidth Allowance Monitor  
USB 4G/3G Modem Support  
Support for Dynamic DNS services

**LAN**  
DHCP Server for LAN Clients  
Extended DHCP Options  
DHCP Reservation  
DNS Proxy for LAN Clients  
VLAN on LAN Support  
Per-Port VLAN Support

**Captive Portal Support**  
Support for Wired and Wireless LAN Clients  
Support for RADIUS Authentication  
Time and Usage Quotas on Open Access Mode  
Built-in Customizable Splash Page

**Advanced QoS**  
User Groups  
Bandwidth Reservation  
Individual Bandwidth Limit  
Application Prioritization  
SIP, HTTPS, VPN QoS  
Custom Application QoS

**Load Balancing**  
Intelligent Failover  
Session Persistence  
Per-Service Load Distribution  
Multiple Algorithms

**Security**  
Stateful Firewall  
DoS Prevention  
Web Blocking  
Web Filtering Blacklist

**Complete VPN Solution**  
PepVPN/ SpeedFusion Bandwidth Bonding  
Site-to-Site VPN  
Bandwidth Bonding  
Hot Failover  
256-bit AES Encryption  
Pre-shared Key Authentication  
Dynamic Routing  
IPsec VPN (Network-to-Network)

**Networking**  
NAT and IP Forwarding  
Static Routes  
Port Forwarding  
Many to One, One to One NAT  
NAT Pool  
SIP ALG, H.323 ALG  
UPnP, NAT-PMP

**Device Management**  
Web Administrative Interface  
Command Line Interface  
InControl Cloud Management  
Email Notification  
Active Client & Session Lists  
Bandwidth Usage Statistics  
Syslog Service  
SNMP v1, v2c and v3

**Package Content**  
MAX HD2  
12V3A Power Supply  
4x 5dBi Wi-Fi Antennas  
1x GPS Active Antenna  
4x 2dBi 4G LTE Antennas  
1 Pair of Mounting Brackets